

# C.I.P.

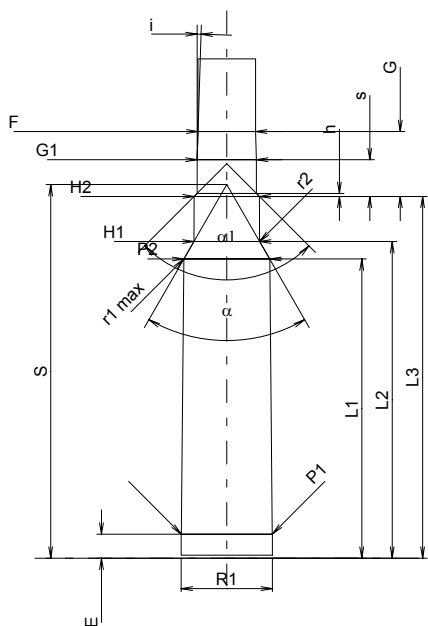
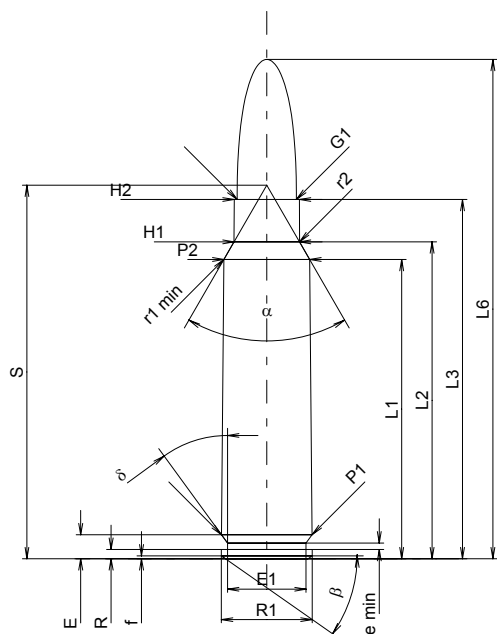
## 300 Savage

Country of Origin: US

TAB. I

Date 84-06-14

Revision 02-05-15



Scale 1:1

Dimensions in << mm >>  
Dimensions and Tolerances for Proof Barrels  
see Appendix CR 1.

### CARTRIDGE MAXI

#### Lengths

L1 <sup>1)</sup>	=	39.59	-0.20
L2 <sup>1)</sup>	=	41.92	-0.20
L3 <sup>1)</sup>	=	47.52	
L4	=		
L5	=		
L6	=	66.04	

#### Case Head

R	=	1.24	
R1	=	12.01	
R3	=		
E	=	3.18	
E1	=	10.39	
e min	=	0.84	
delta	=	36°	
f	=	0.38	
beta	=	35°	

#### Powder Chamber

P1	=	11.99	
P2 <sup>1)*</sup>	=	11.34	-0.20

#### Junction Cone

alpha*	=	60°	
S*	=	49.41	
r1 min	=	0.76	
r2	=	3.18	

#### Collar

H1*	=	8.65	
H2 <sup>1)</sup>	=	8.61	

#### Projectile

G1 <sup>1)</sup>	=	7.85	
G2	=		
F	=		
L3+G <sup>1)</sup>	=	56.10	

#### Pressures (Energies)

##### Method Transducer

Pmax	=	3650 bar	
PK	=	4198 bar	
PE	=	4560 bar	
M	=	25.00	
EE	=	3525 Joule	

#### Miscellaneous Dimensions

Fe <sup>1)</sup>	=	0.15	
delta L	=		

### CHAMBER MINI

#### Lengths

L1	=	39.57	
L2	=	41.88	
L3 <sup>1)</sup>	=	47.85	

#### Breech

R	=		
R1	=	12.07	
R2	=		
R3	=		
r	=		

#### Powder Chamber

E	=	3.18	
P1 <sup>1)</sup>	=	12.02	
P2*	=	11.36	

#### Junction Cone

alpha <sup>1)*</sup>	=	60°	
S*	=	49.41	
r1 max	=	0.76	
r2	=	3.18	

#### Collar

H1*	=	8.69	
H2 <sup>1)</sup>	=	8.64	

#### Commencement of Rifling

G1 <sup>1)*</sup>	=	7.86	
G <sup>1)</sup>	=	8.58	
alpha1*	=	90°	
h	=	0.39	
s	=	4.85	
j <sup>1)*</sup>	=	1°43'	
w	=		

#### Barrel

F <sup>1)*</sup>	=	7.62	
Z <sup>1)</sup>	=	7.82	

#### Grooves

b	=	2.41	
N	=	6	
u	=	305.00	
Q	=	47.10	mm <sup>2</sup>

Notes: 1) Check for safety reasons  
\* Basic dimensions